



Pen Tablet

User Manual

www.huion-tablet.com

Contents

I. General Information	3
1. Overview	3
2. Pen Tablet Functions.....	3
3. System Requirements	3
4. Installing the Driver Software on Windows	3
5. Hardware Installation	3
6. Verifying Hardware and Driver Functions.....	4
7. Usage Tips	4
II. Pen tablet configuration	5
1. The Info Tab	5
2. Monitor Setting	6
3. The Button Tab.....	7
3.1 Button Name	7
3.2 Double Click Time	7
3.3 Default.....	7
4. Express Keys define page	7
4.1 Default.....	8
4.2 Re-define Express keys.....	8
4.3 Common	8
4.4 Mouse	9
4.5 Multimedia.....	9
4.6 Other.....	10
4.7 Run	10
4.8 Internet.....	11
4.9 Hot Key	11
5. The Scope Tab.....	12
6. The Pressure Tab.....	15
6.1 Pressure Test.....	15
6.2 Clear	15
6.3 Click Sensitivity	15
III Storing the Digital pen and changing the Pen Battery & Tip	16
IV. Question & Answer	17

*The driver may already be updated to a newer version prior to packaging. If your installation screen does not match the content of this manual, please refer to your software screen after installation.

I. General Information

1. Overview

Welcome to the world of tablet and rechargeable pen! You are able to discover how easy to control your personal computer by using a wireless rechargeable pen to instead of a mouse:

The function of the rechargeable pen is able to draw a line very thin, thick, light or dark (called pressure sensitivity). You also can write, sign, annotate documents, and draw, sketch or paint as easily as you would on normal paper and simulate the functions like pencil, mark pen, brush, or watercolor pen by using the commercial software packages such as Adobe® PhotoShop™, Corel® Painter and Paint Shop. If MSN Messenger 8.5 or newer is installed, you create and send digital handwritings and hand drawn pictures, making communication much more fun and entertaining.

Note: If you cannot enable the handwriting mode in MSN Messenger, download the relevant handwriting component from Microsoft's website.

2. Pen Tablet Functions

After installing the device driver, your pen tablet features has the following functions:

1. Direct pointing – You can move the cursor to any location on the screen by hovering the rechargeable pen tip over the tablet's surface.
2. Three-buttons mouse commands - Your pen tablet provides all functions of a three- buttons' mouse by using its pen tip and two buttons.
3. Pen scrolling – You can scroll documents and Web pages by pressing the middle button of the rechargeable pen over the tablet's working area.
4. Pressure sensitivity – This feature allows you to emulate various brushes and pencils and you can press down the pen tip harder, lighter, stronger or thicker, and subtle pencil lines you will receive.

3. System Requirements

Windows XP/Vista/Windows 7/Windows 8
 USB port
 DVD-ROM driver

4. Installing the Driver Software on Windows


For Microsoft Windows XP, Vista ,Windows 7 and Windows 8 operating systems:

1. Insert the Driver CD into the CD-ROM drive, and wait for the main installation screen to appear.
 2. The main installation screen should appear automatically, or you can manually start the installation by opening[My Computer] [CD/DVD Rom] then click on the [Setup]program.
 3. When installing the driver, follow the installation instructions on screen and press the "Enter" key.
- After the installation has completed, reboot the computer.

5. Hardware Installation



Connecting a tablet with USB interface into the PC after the driver installation is finished and you have restarted Window:

To connect a pen tablet into the PC, you will see a small tablet icon () appears in the system tray, which is normally at the lower right corner of the screen.

6. Verifying Hardware and Driver Functions

6.1 Follow the steps to verify if the wired tablet is installed properly:

*The following picture refer only to H58L, the picture of different models will be a difference!



The blue LED light on the tablet is the main indicator for hardware operation and depending on your pen tablet model, it may be located at a different place that shown in the above diagram. This LED normally stays off, and will only turn on or off in response to various conditions. Watch the state of the LED on the tablet as you go through these test steps:

1. Press down the “power on” button at the top of the pen, then the pen will be turned on and activated. If you want to quit your work, press it again to turn it off.
2. As soon as the pen tablet itself activates, the LED will be lit briefly, and will then go and stay off again.
3. When the tablet detects the presence of the digital pen or mouse, the LED will be blink slowly. This happens either when pen tip is hovering or placing within the working area which above the tablet.
4. When you press a button on the pen barrel, the LED will be lit up.
5. Hovering and moving the pen or the mouse in the working area will cause the cursor on the screen to move accordingly.

Note: After the tablet's device driver has been properly installed, a small tablet icon (🖱️) will appear in the system tray, which is normally at the lower right corner of the screen.

7. Usage Tips

7.1 Double tapping

When you double tap with the digital pen (equivalent to a double click with a mouse), try to keep the pen tip away from the tablet's surface, or at least try to lift the pen tip as fast as possible before the second tap.

7.2 Storing the digital pen

To store the pen, make sure the pen tip does not touch anything, and especially do not let the pen stand in a cup or pen holder with the tip down. Even though the possibility is low, constantly put stress on the pen tip might damage precise configuration of the pen. Place the pen in a penholder, or turn the pen tip pointing upward or horizontally with the pen tip free of any pressure by other objects.

7.3 Scrolling function of digital pen



The digital pen has the same function of the normal mouse for scrolling pages. Press the first button of the digital pen (same function as mouse's middle click) over the tablet's working area.

7.4 Using a pen without an ordinary mouse

You may install the digital pen, digital mouse, and normal mouse in your computer at the same time and you can also remove them to a different computer as well. However, only one device is able to work at a time.

* Do not use more than two devices at the same time in case the screen cursor is jittering or not moving.

II. Pen tablet configuration


You may configure the pen tablet by modifying the functions of the pen tip and the two barrel buttons, tap [Start] > [Settings] > [Control Panel], and double-tap the [Tablet Setting ] icon, or tap on the tablet icon () in the system tray, usually located at the lower right corner of the screen. You may also adjust the pressure sensitivity of the rechargeable pen by determining the scope of the tablet's working area, or (re-) program the hot-cells of your pen tablet by modifying device driver.

1. The Info Tab

The Info tab displays the version number of the driver and Tablet PC function.



(1) Show Icon in System Tray

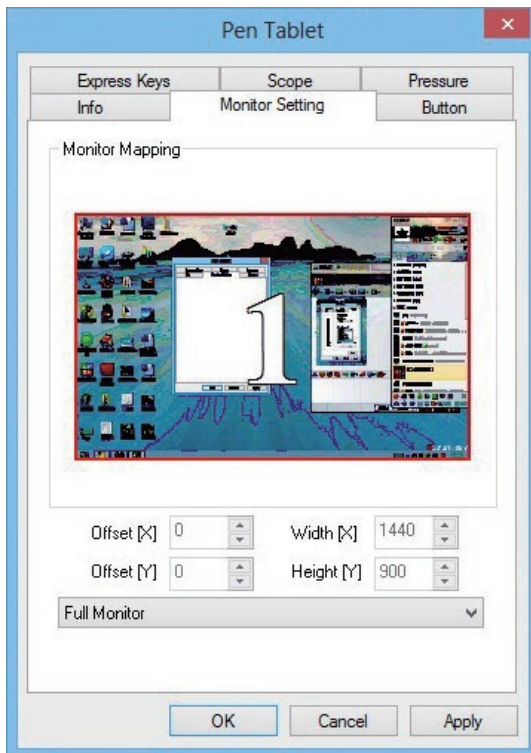
You can choose it if you want to show the tablet icon () in the system tray.

(2) Support Tablet PC Feature

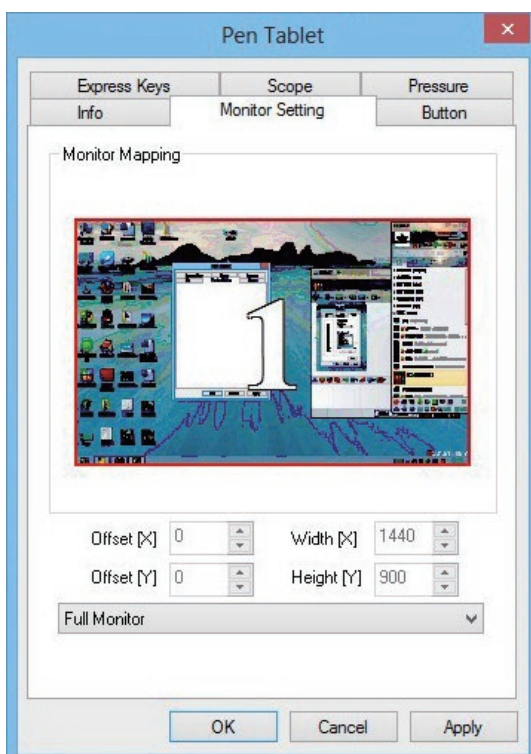
You can select the Tablet PC function of pressure sensitive by tick the box of Support Tablet PC Feature.

- After the tablet driver is installed in Windows, the Tablet PC function setting will support pressure in MS Journal, OneNote (2003 - 007), etc.
- If the Tablet PC setting is disabled, most of the art software's pen pressure (Photoshop, Illustrator, Corel Painter) are still working, but the pen pressure will not be available in MS Journal, OneNote (2003 - 2007), etc.

2. Monitor Setting



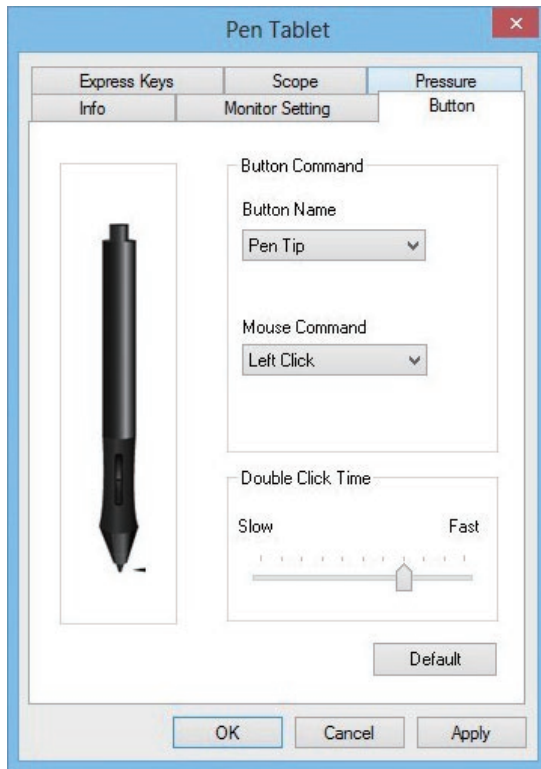
Select "Full Monitor", "Portion of Monitor", "Monitor 1" or other choices according to your requirements to adjust screen sizes, you could operate on the chosen one only once you choose. (Primary users please keep the default states)



3.The Button Tab

3.1 Button Name

You may re-program the functions of the pen tip and the two-barrel buttons by selecting the button name from the drop down menu and assign a command of a traditional three-button mouse to it. According to the mouse function, you can select no action, left click, left double click, middle click, middle double click, right click, or right double click.



3.2 Double Click Time

Move the Speed Slider toward “Slow” if you want more time in double tapping with the Pen Tip or opposite if you move the Speed Slider toward “Fast”. This setting is the same as Double -click Speed on the page displayed by selecting Start / Control Panel / Mouse ? Buttons. Changing the speed in one place or changing the other in the meanwhile.

3.3 Default

Tap on the Default button to recovery from all the manufacture settings.

4.Express Keys define page

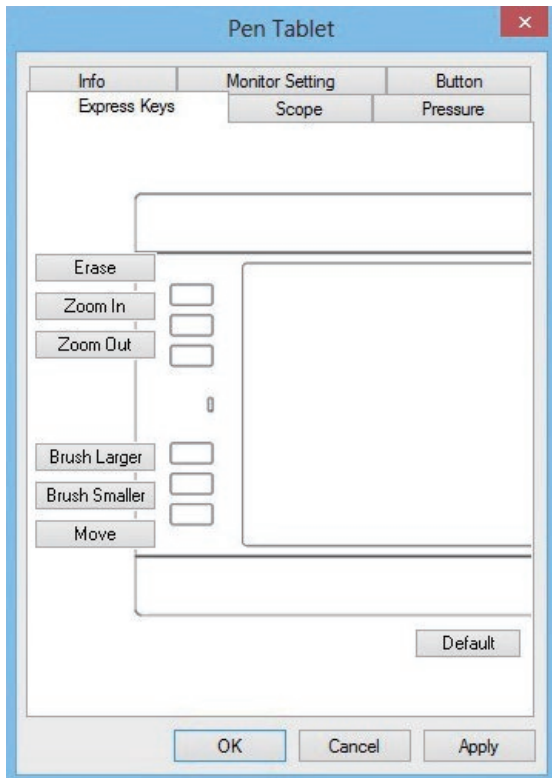
Express Keys :

For the models with express keys, you can change the express key settings from the Express Keys

Configuration Page.

4.1 Default

Resume the Express Keys to the default settings.



4.2 Re-define Express keys

Select "Common", "Mouse", "Multimedia", "Other", "Run", "Internet" and "Hot Key" tabs to re-define the settings.

4.3 Common



Express key name
Rename the Express Key.

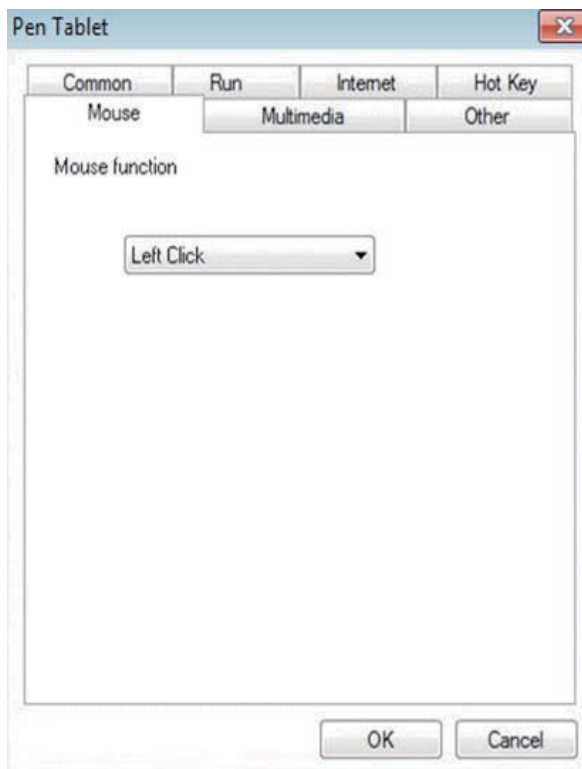
Disable
Disable the Express Key name display on the Pen Tablet control panel.

Default
Resume the Express Key name to the default setting

4.4 Mouse

Mouse function

Select Mouse mode settings.



4.5 Multimedia

Multimedia function

Select multimedia function settings: "Play/Pause", "Stop", "Previous", "Next", "Mute", "Volume Up" and "Volume Down"





4.6 Other

Tablet's working area

Select "Largest Working Area" or "Screen Ratio".

Show setting

Show Express key name.

4.7 Run

Run

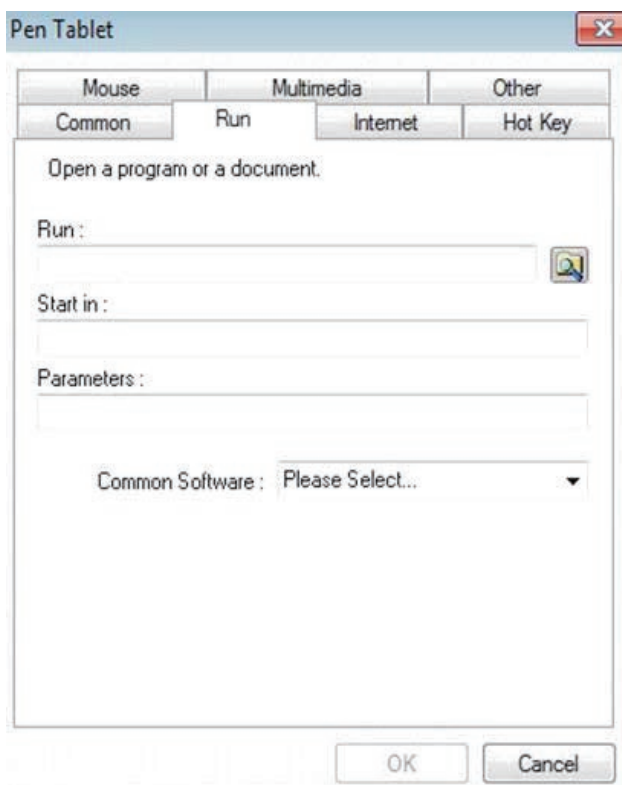
Use the browse button to select a file and run, or type in a file name with the complete path.

Start in

This is the initial folder when the program starts the execution.

Parameters

The string type will be passed to the program as parameters. For example, you may type in a document name here and pass it to a word processing program specified in the Run line above.



4.8 Internet

Network function

Select "Previous Page", "Next Page", "Refresh", "Stop", "My Favorite", "IE", "E-Mail".

Link to:

Kind of Service

Select an Internet service to start. For example, browsing website, send an E-mail. The exact program initiated (for example, the browser program) depends on system settings. Address

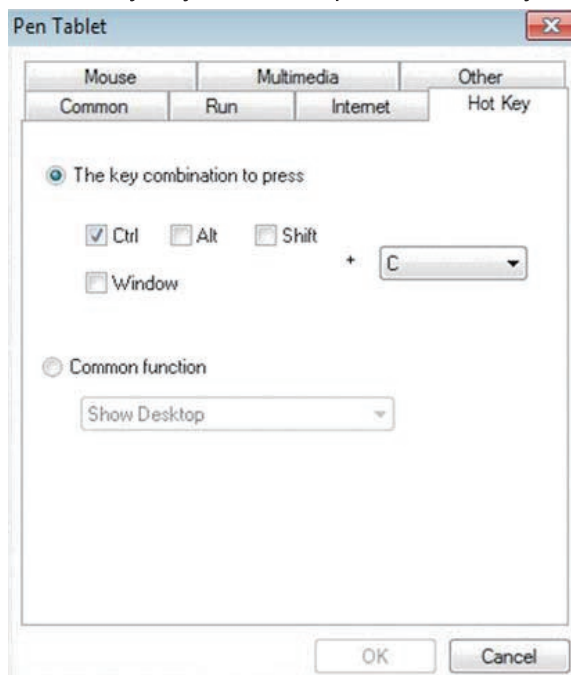


The URL address for the selected service.
For example, the Website or e-mail addresses.

4.9 Hot Key

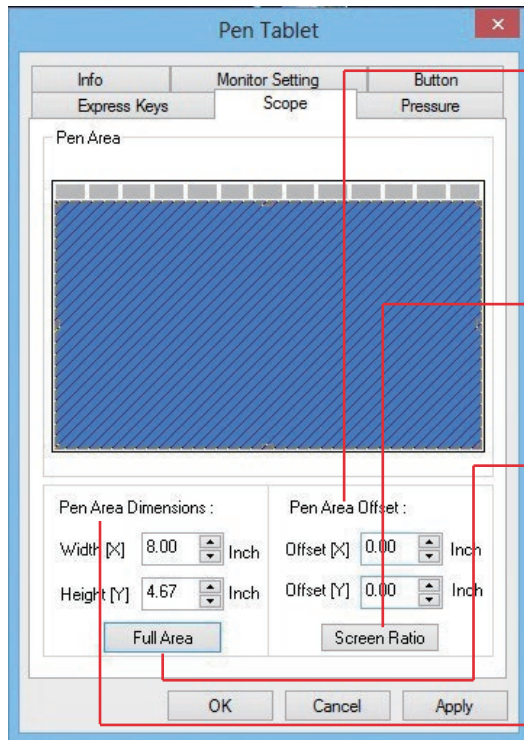
The key combination to press

Select any key such as alphanumeric key or cursor control key, combined with Shift, Ctrl and/or Alt key.



Common function
Select some common used settings.

5.The Scope Tab



5.1 Pen Area Offset

Indicates the horizontal and vertical distances of the upper left corner of Pen Area from the upper left corner of the maximum Pen Area. You may also set their values by typing in the numerical values here.

5.2 Screen Ratio

Set the tablet working area same as the screen size by clicking the button of screen ratio.

5.3 Full Area

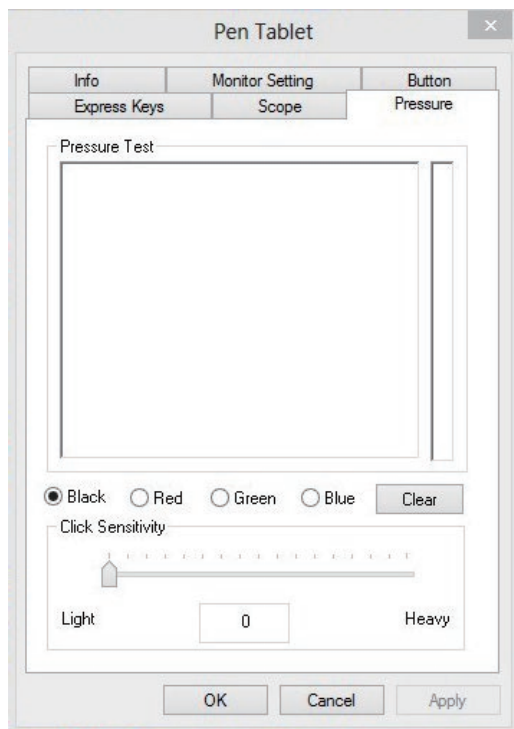
Tap on the Full Area button to select the largest possible working area.

5.4 Pen Area Dimensions

Indicates the current height and width in the Pen Area Dimensions. You may also type in new values here to change the dimensions of the tablet working area.

5.5 Pen Area

The Working area can be adjusted by moving the space.



6.The Pressure Tab

6.1 Pressure Test

There are four different colors for selecting and the pressure sensitivity of the pen tablet can be adjusted in this tab. There is a test area to see the thickness of a line by pressing a certain pressure of pen tip on the tablet pad. The numerical value of the pressure level is shown in the field above the Clear Button.

6.2 Clear

Tap on the Clear button to clean the space up in the Pressure Test area.

6.3 Click Sensitivity

By default setting, tapping with the pen tip is equivalent to a left click of a mouse. Move the slider in the sensitivity bar to adjust the response of the pen tip. Light means when presses the pen tip that will be reacted very quickly with a slight power, but the heavy function is opposite.

III Storing the Digital pen and changing the Pen Battery & Tip

Storing the Digital pen properly

To store the Digital pen, make sure that the tip does not touch anything, especially, do not let the pen stand in a cup or penholder with the tip down. Pressure applied to the pen tip might damage the precise configuration of the pen, it is recommended to place the pen in a pen holder or store it with the pen tip pointing upward, or place it horizontally with the pen tip free of any other objects.

Note: It's recommended to turn the power off by pressing the power button at top of the pen to save battery. See below about how to change batteries.

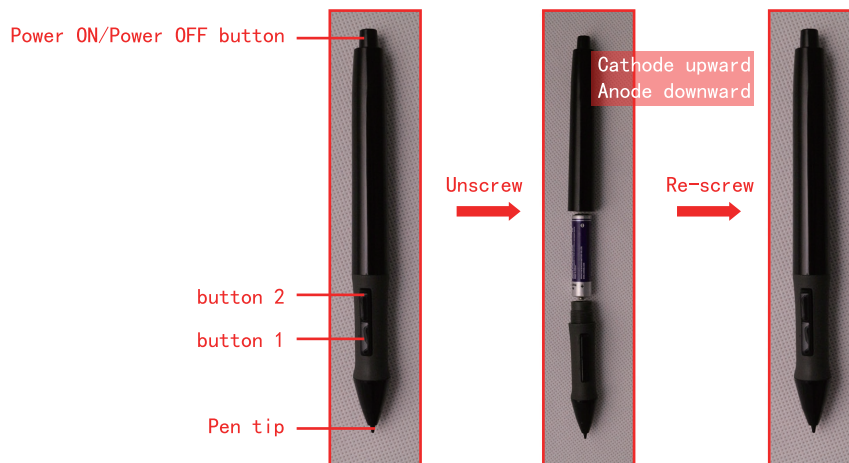


Fig. (A) Unscrew the pen,

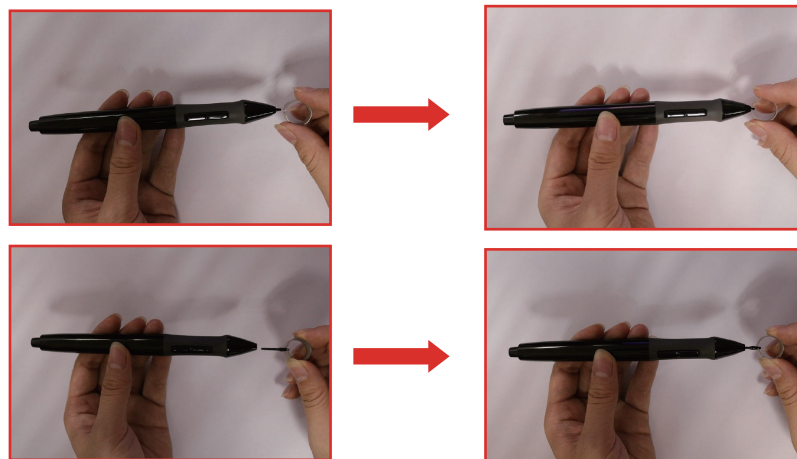
Fig. (B) Put an AAA battery into the pen-holder, + pole towards to pen tip end.

Hold down the power on/off button, then the pen works.

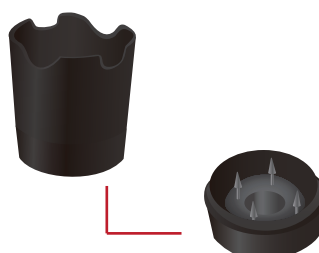
Changing the wireless stylus pen tip

A: Pull out the pen tip from Digital pen by using a Pen Clip that contained inside the pen holder. Normal Pen Clip

B: Push the pen tip into the digital pen, Make sure fit it up to the end properly.



Gently unscrew the pen holder in a counterclockwise direction. you'll see one pen tip replacement tool & 4 spare pen tips inside.



The pen tip replacement tool 4 pen tips

IV. Question & Answer




Question 1:How can I get the update software?

Answer: You can download the new driver from our website.

1. Uninstall your old driver: Click [Start] ► [All Programs] ► [TABLET] ► [Uninstall].
2. Download the latest version of driver in the download section and save it into your hard disk.
3. Unzip the file in a folder on your hard disk (with Windows built-in unzip utility or a program like Winzip for instance).
4. Double-click the Setup.exe in the folder where you unzipped the file.

Question 2: The tablet cannot work. How can I do?

Answer: Please follow steps as showing below:

1. Please pull off the tablet's USB plug from the computer.
2. Remove the Tablet driver from the system.
3. Re-connect the Tablet's USB to the computer.
- 3.1 Check whether the tablet's LED is blinking or not? If the LED unlighted, that means your tablet is fault.
- 3.2 Test your wireless digital pen on tablet working area, if it can work as a mouse, which means the hardware is OK. If it doesn't work, please change the battery with a new one.
- 3.3 After changed a new battery for the pen, if it still not working, that means the hardware is fault.
4. You can download the latest version of driver directly from our website: www.huion-tablet.com.
5. After installing the new version of driver, the system will require you to restart your computer.
6. After restart your computer, on bottom right of the screen, you can find the tablet icon () within there.
- 6.1 If you can't find the tablet icon () on the bottom right of the screen, it means the driver fail in startup, It might cause by an incompatible issue.
- 6.2 Check from [My Computer] ► [Properties] ► [Hardware] ► [Device Manager], if there is an exclamation mark occurs, it means the installed driver of tablet is incompatible with the windows system. If you have this problem, please contact us for more service.
7. By clicking the tablet icon () on the bottom right of the screen, you can test the pressure. If you do not have the pen pressure, it means the pen might be faulty. sensitivity to see whether the pen pressure function works or not. (Please see the chapters 2, section 6, Pen tablet onfiguration for more details).

Question 3:The LED of tablet is blinking continuously?

Answer: It means that the USB port of your PC has a bad connection or power is not stable. Please re-plug in your USB/dongle again. If still not working, please change to another USB port.

Question 4:Why does the LED flash when tapping the tablet by pen?

Answer: Please check if the distance is too far between dongle from wireless tablet or it's because of the working environment. If so, please auto bind the dongle again. If tablet can't bind to dongle, please kindly send it back to where you purchased for repair.



Shenzhen Huion Animation Technology Co., LTD

Tel : +86-755-61537861

Fax : +86-755-61537108

Email : service@huion.cn

Skype : huion2001

Address:Huion Building,Hi-Tech Park Shifeng, ShenZhen, P.R.China